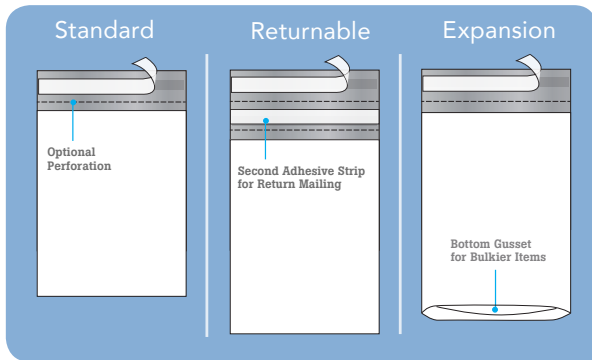




# POLY MAILERS



Designed to protect mailed items from damage and prying eyes, Our Poly Mailers are tear resistant and durable; built from co-extruded poly to withstand over-stuffing and the wear and tear of shipping. These opaque courier bags have a white outer surface and silver inner surface for added security.

## PRODUCT FEATURES

- ▶ Tear-resistant and durable
- ▶ Tamper-evident, with a permanent self-seal adhesive strip for easy closure
- ▶ Choice of Standard (non-perforated), Perforated, Returnable, and Expansion (bottom gusseted).
- ▶ Returnable Poly Mailers have a second adhesive strip to allow for easy merchandise returns or a second shipment.
- ▶ Expansion Poly Mailers have a bottom gusset to accommodate bulky items.

## POLY MAILERS

ITEM	W x L	LIP	CNT	WT
<b>NON-PERFORATED</b>				
63580	6 X 9	1.5"	1000	12
63581	7.5 X 10.5	1.5"	1000	17
63582	9 X 12	1.5"	1000	22
63583	10 X 13	1.5"	1000	26
63585	12 X 15.5	1.5"	500	19
63600	14 X 17	1.5"	500	23
63587	14.5 X 19	1.5"	500	27
63588	19 X 24	2"	200	18
63589	24 X 24	2"	200	22
<b>PERFORATED</b>				
63630	6 X 9	1.5"	1000	12
63631	7.5 X 10.5	1.5"	1000	17
63632	9 X 12	1.5"	1000	22
63634	10 X 13	1.5"	1000	26
63636	12 X 15.5	1.5"	500	19
63638	14 X 17	1.5"	500	23
63640	14.5 X 19	1.5"	500	27
63642	19 X 24	2"	200	18
63644	24 X 24	2"	200	22

## RETURNABLE POLY MAILERS

ITEM	W x L	LIP	CNT	WT
63680	12 X 15.5	3"	500	19
63685	14 X 17	3"	500	23
63690	19 X 24	3"	200	17

## EXPANSION POLY MAILERS

ITEM	W x L	LIP	CNT	WT
<b>NON-PERFORATED</b>				
63715	10 X 13 - 2" BG	1.5"	1000	22
63718	11 X 13 - 4" BG	1.5"	500	13
63721	13 X 16 - 4" BG	1.5"	500	19
63724	15 X 20 - 4" BG	1.5"	300	16
63727	20 X 24 - 4" BG	2"	200	17
63730	26 X 28 - 5" BG	2"	100	13

# NAPSco.